

SYNERGY



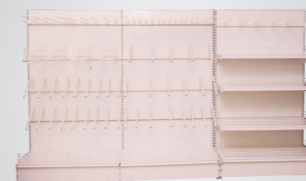
SYNERGY

#A3 & A4, 14th A Cross, Peenya, Bengaluru, Karnataka - 560058.

Contact : +91 9844038341, +91 9844261816

Email : chand@synergypunching.com, reddy@synergypunching.com

Web : www.synergypunching.com



[www.synergypunching.com](http://www.synergypunching.com)



### About us

Synergy, established in 2001 caters the retail sector with highly sophisticated CNC machines, automated powder coating facilities to give our customers a one-stop solution for supermarket fixtures. While having a 1,20,000 Sq. Ft. dedicated facility located in Peenya, Bangalore.

Our design team takes all necessary information consulting the customer at the store and establishes the drawing with suitable fixture solutions. The Manufacturing team then takes it forward by manufacturing fixtures whilst installation team completes the job and hands it over to the customer. Our team at Synergy consists of 400 employees with great expertise in their respective fields that have executed more than 25,000 stores across our sub continent.

Synergy Integrates  
Supermarket / Hypermarket Racking Solution  
Electronics Stores – Brand & Multi-Brand Stores, Apparels and Pharmacies

### Infrastructure



Turret Punch Press - 5 Nos



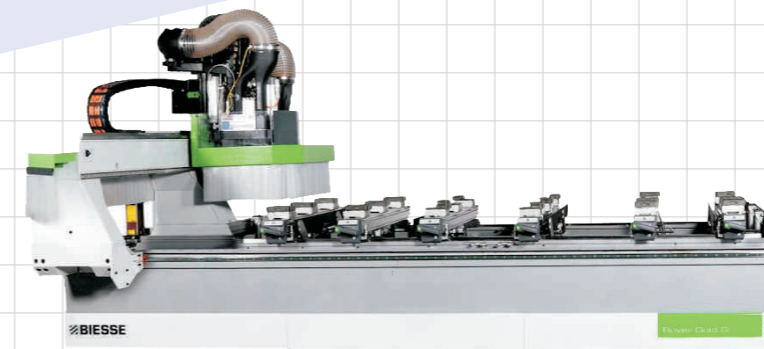
Press Break - 10 Nos

Fiber Laser Machine



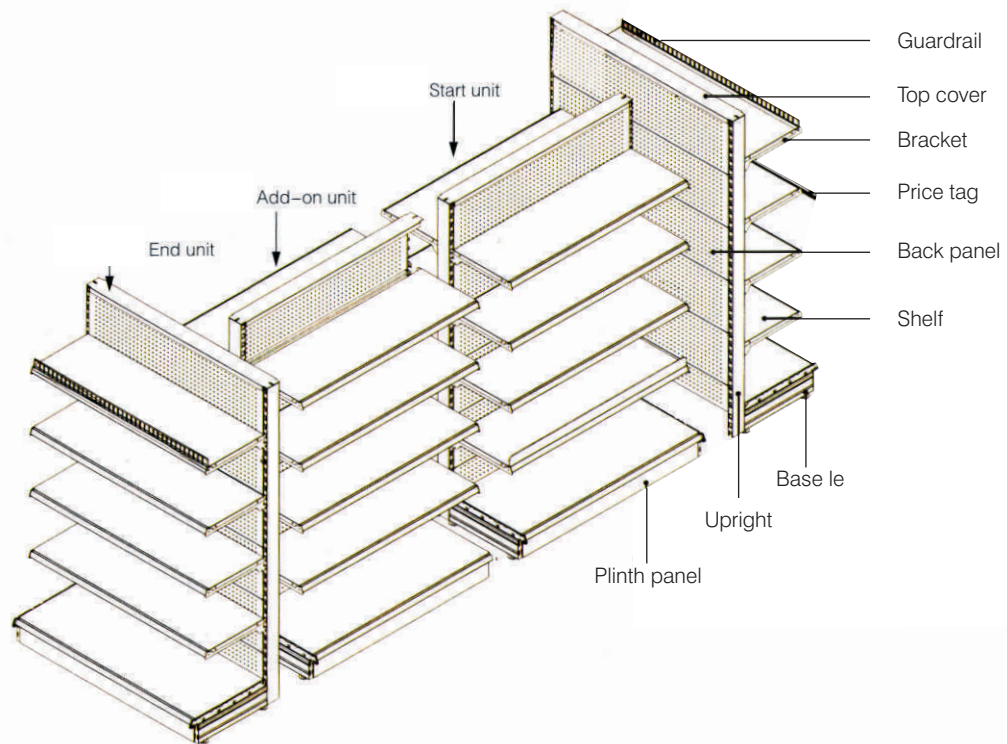
Edge Banding Machine

Panel Cutting Machine



Routing Machine

## Centre Racks with End Racks



Product Name	Specification				
		L	W	H	No. of Layers
SRI001	Single Side	1200	350, 400, 450, 500	1500, 1800, 2100, 2400	1-7
SRI002	Double Side	1200	800, 900, 1000, 1100	1500, 1800, 2100, 2400	1-7



Product Name	Specification				
		L	W	H	No. of Layers
SRIP001	Single Side	1200	350, 400, 450, 500	1500, 1800, 2100, 2400	1-7
SRIP002	Double Side	1200	800, 900, 1000, 1100	1500, 1800, 2100, 2400	1-7



Product Name	Specification				
		L	W	H	No. of Layers
SRIG001	Single Side	1200	350, 400, 450, 500	1500, 1800, 2100, 2400	1-7
SRIG002	Double Side	1200	800, 900, 1000, 1100	1500, 1800, 2100, 2400	1-7



Product Name	Specification				
		L	W	H	No. of Layers
SRIGL001	Single Side	1200	350, 400, 450, 500	1500, 1800, 2100, 2400	1-7
SRIGL002	Double Side	1200	800, 900, 1000, 1100	1500, 1800, 2100, 2400	1-7



Product Name	Specification				
		L	W	H	No. of Layers
SRB001	Single Side	1200	350, 400, 450, 500	1500, 1800, 2100, 2400	1-7
SRB002	Double Side	1200	800, 900, 1000, 1100	1500, 1800, 2100, 2400	1-7

## Wall Rack



Product Name	Specification				
		L	W	H	No. of Layers
Single Side		1200	350, 400, 450, 500	1500, 1800, 2100, 2400	1-7
Double Side		1200	800, 900, 1000, 1100	1500, 1800, 2100, 2400	1-7



## Grocery Bins





## Fruits &amp; Vegetable Units

SRF&amp;B 001 4Ft./6Ft.



SRF&amp;B 003







## Apparels





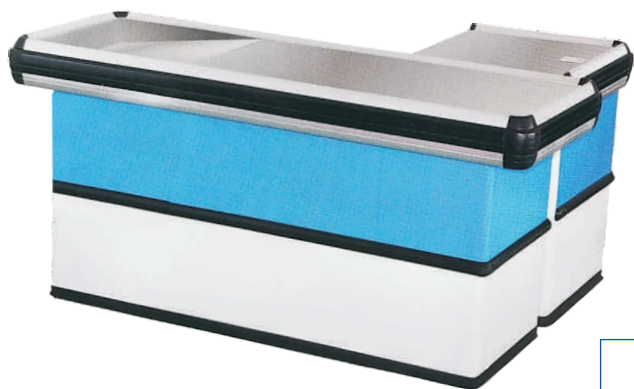


## Electronic Fixtures



## Cash Counters

SRCC001



1800x600x850  
600x600x850



SRCC002



1800x900x850  
600x600x850



## Cash Counters

SRCC004



1500x600x850  
600x600x850



SRCC003



1200x600x850  
600x600x850



SRT-PL 80/120



## Shopping Trolley

SRT-PC 80/120



SRSB001



SRSB002



## Promotion Bin

SRPR001



L1000xW1000xH580

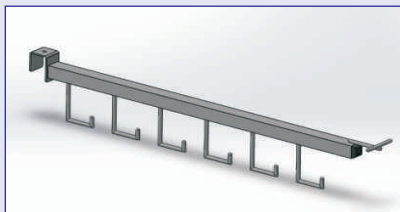
SRPR002



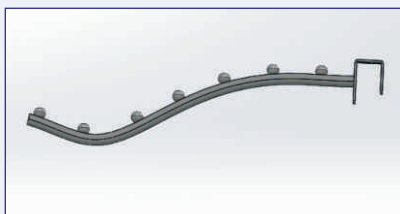
L1000xW1000xH580



## Accessories



COMMON ACCS PEG PIPE HOOK\_ SQ19 X 500L



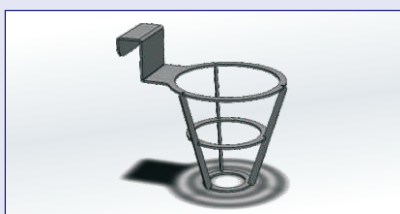
CUP ACCS PEG CURVE ROD DIA10 X 325L



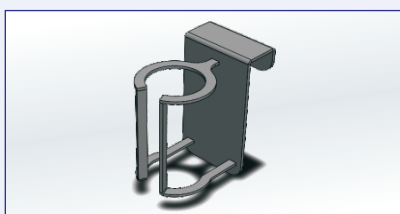
HANGER BAR - 4FT / 3.3FT



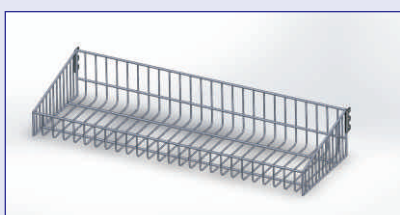
PLATE DISPLAY HANGER -220W X 450L



HAIRDRYER DISPLAY



TRIMMER DISPLAY



Mesh shelf 1200W X 375D X 200H



